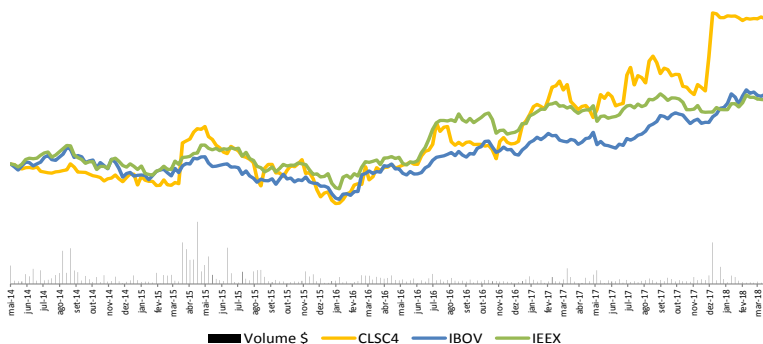




CORPORATE PROFILE

Structured as a Holding Company in 2006, the Company has two wholly-owned subsidiaries - Celesc Geração S.A. and Celesc Distribuição S.A. In addition, it holds the controlling interest of the Gas Company of Santa Catarina (SCGÁS) and is a partner of the company named Dona Francisca Energética S.A. (DFESA), Companhia Catarinense de Transmissão de Energia S.A. (ECTE), Companhia Catarinense de Água e Saneamento (CASAN), and of the Usina Hidrelétrica Cubatão S.A. and EDP Transmissão Aliança SC projects. Its controlling shareholder is the State of Santa Catarina, holder of 50.2% of the Company's ordinary shares, corresponding to 20.2% of the Total Capital.

CLSC4 – IBOV – IEE – EVOLUTION - MAY/ 2014 TO MARCH/ 2018



CLSC4

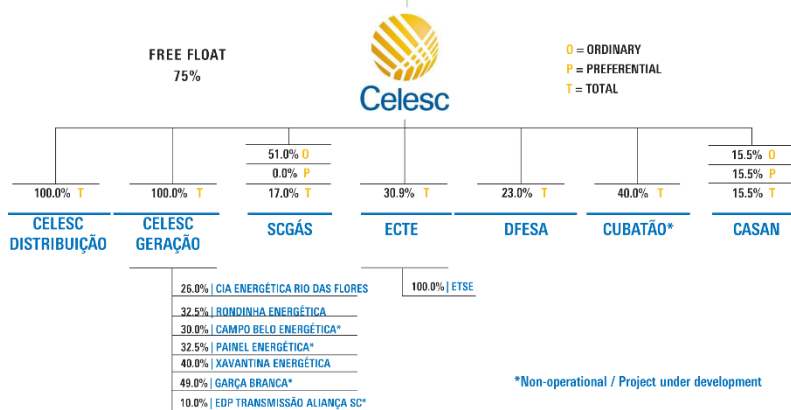
End of the 1Q18: R\$ 26.60
Charge in 1Q18: -1.84%
Ibovespa: 11.73%

Market Value at 03/31/2018

R\$ 1,158.0 millions
US\$ 353.0 millions
Free Float 75.5%

Main Highlights	4nd Quarter		
	2017	2018	Δ
Operating Indexes			
Celesc Distribuição - Energy Sales (GWh)	6,318	6,318	0.0%
Celesc Geração - Energy Produced (GWh)	173	184	6.5%
SCGÁS - Natural Gas Sales (thousand/m³)	153,121	166,729	8.9%
Financial Indexes - Consolidated (R\$ Million)			
Gross Operating Revenue	2,626.8	2,937.6	11.8%
Net Operating Revenue	1,445.2	1,680.4	16.3%
Operating Costs and Expenses	(1,381.3)	(1,640.7)	18.8%
EBITDA (IFRS)	214.5	191.9	-10.5%
EBITDA Margin	14.8%	11.4%	
EBITDA (IFRS - Non-Recurring)	214.5	191.9	-10.5%
Adjusted EBITDA Margin	14.8%	11.4%	
Net Income (IFRS)	101.7	71.0	-30.2%
Net Margin	7.0%	4.2%	
Net income (IFRS - Non-Recurring)	101.7	71.0	-30.2%
Adjusted Net Margin	7.0%	4.2%	
Investments Made in Generation and Distribution of Electricity	104.3	106.2	1.8%

ESTADO SC	EDP ENERGIA	ELETROBRAS	CELOS	NEON LIBERTY	GF LPAR FIA	ALASKA POLAND FIA	OUTROS
50.2% O	33.1% O	0.0% O	8.6% O	0.0% O	1.7% O	0.0% O	6.4% O
0.0% P	10.5% P	18.0% P	1.0% P	5.1% P	12.2% P	14.0% P	39.2% P
20.2% T	19.7% T	10.7% T	4.1% T	3.0% T	7.9% T	8.4% T	26.0% T



HIGHLIGHTS OF THE PERIOD

- Total of billed energy in the CELESC D concession area amounted to 6,318 GWh, particularly the industrial consumer class, which grew 5.5% in relation to 1Q17, totaling 2,394 GWh;
- Quality of service indicators: DEC was 3.12 hours (reduction of 12.8%) and FEC was 2.12 times (decrease of 12.7%) in the first three months of 2018;
- Consolidated Net Operating Revenue (excluding Construction Revenue) totaled R \$ 1.7 billion in the quarter, an increase of 16.3%;
- Energy expenditures (non-manageable costs) increased 25.9% (+ R \$ 264 million) in 1HQ18 compared to 1Q17;
- Personnel expenses decreased by 4% (-R \$ 6.3 million) in the period; Consolidated Net Income of R \$ 71.0 million (down 30.2%), with the subsidiary Celesc D totaling R \$ 57.4 million (down 39.7%) and the subsidiary Celesc Geração R \$ 14.7 million (increase of 47.1%);
- Consolidated EBITDA totaled R \$ 191.9 million (down 10.5%), with the subsidiary Celesc D totaling R \$ 167.6 million (down 14.8%) and Celesc Generation R \$ 25.3 million (an increase of 11, 5%);
- The Celesc Group ended the period with a Net Consolidated Debt of R \$ 108.9 million, equivalent to 0.2x Adjusted EBITDA 12M;
- Investments in distribution and generation of electric energy totaled R \$ 106.2 million, of which R \$ 100.5 million in distribution and R \$ 5.7 million in generation; and
- The preferred shares of Celesc (CLSC4) varied negatively 1.84% in the quarter, however in the accumulated twelve months it appreciates 45.43%.

Wholly-owned Subsidiaries

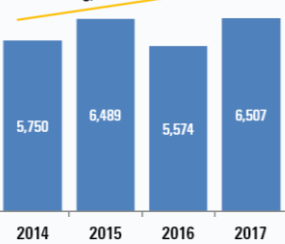
Celesc Distribuição S.A.

The company carries energy to more than 2.8 million consumer units located in 264 municipalities in Santa Catarina (92% of the state's territory) and in Rio Negro, in Paraná. On a monthly basis, the company distributes more than 1.8 million MWh and its annual gross sales reached the amount of R\$ 11.3 billion in 2017.

Net Operating Revenue (R\$ MM)

EXCLUDES CONSTRUCTION REVENUE

CAGR 4.2%



Net Loss (R\$ MM) and Net Margin (%)

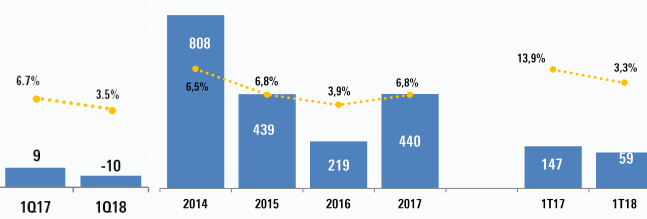
IFRS

+16.5%



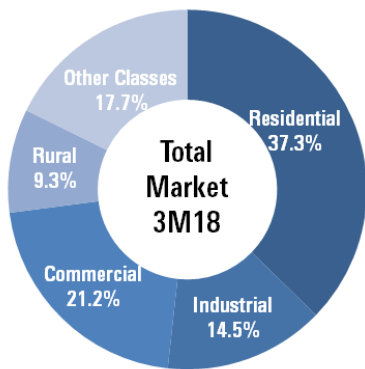
EBITDA (R\$ MM) e Margem EBITDA (%)

IFRS



-60%

Celesc Distribuição - Consumption per Class - 1Q18



Celesc Distribuição S.A. | Energy Distributed per Class (GWh)

Consumption Class	Nº Consumer Units			Consumption (GWh)		
	mar/17	mar/18	Δ	1Q17	1Q18	Δ
Captive Market	2,853,384	2,920,056	2.3%	4,442	4,258	-4.1%
Residential	2,232,844	2,289,794	2.6%	1,691	1,588	-6.1%
Industrial	102,132	103,782	1.6%	648	616	-4.9%
Commercial	257,030	264,890	3.1%	963	902	-6.4%
Rural	234,954	234,609	-0.1%	390	397	1.8%
Other Classes	26,424	26,981	2.1%	750	755	0.7%
Public Entities	22,473	22,910	1.9%	117	113	-3.4%
Public Lighting	690	754	9.3%	158	164	3.7%
Public Service Co.	3,231	3,285	1.7%	91	92	0.8%
To Other Utilities	30	32	6.7%	383	386	0.6%
Free Consumers	736	842	14.4%	1,872	2,057	9.9%
Industrial	459	520	13.3%	1,621	1,778	9.7%
Commercial	246	293	19.1%	192	221	15.2%
Rural	5	7	40.0%	10	14	36.4%
Supply*	26	22	-15.4%	49	43	-11.0%
Total Market	2,854,504	2,921,278	2.3%	6,318	6,318	0.0%
Residential	2,232,844	2,289,794	2.6%	1,691	1,588	-6.1%
Industrial	102,591	104,302	1.7%	2,269	2,394	5.5%
Commercial	257,276	265,183	3.1%	1,155	1,123	-2.8%
Rural	234,959	234,616	-0.1%	400	411	2.7%
Other Classes	26,450	27,003	2.1%	799	799	0.0%
Own consumption	384	380	-1.0%	4	3	-23.4%

*Can be reconciled by CCEE.

Celesc Geração S.A.

Celesc Geração is the Celesc Group subsidiary that operates in the electric power generation segment through the operation, maintenance and expansion of its own generation site and the share in energy projects, in partnerships with private investors. Celesc Geração's total generation capacity in operation in the period was 114.8 MW, of which 106.75 MW were related to the owned plant and 8.05 MW related to the generator set established with partners - already proportional to the Celesc Geração shareholding in these ventures.

Companhia de Gás de Santa Catarina – SCGÁS

SCGÁS is the second largest gas distributor in the number of municipalities served in Brazil. Santa Catarina is the third state with the largest natural gas distribution network (1,134.8 kilometers) and the third with the largest number of industries served with natural gas (227), as well as having the third largest network of vehicular gas stations (GNV) in the country (134). With 100% of the concession to operate natural gas distribution services in the territory of Santa Catarina, the company markets and distributes approximately 1.8 million cubic meters of natural gas on a daily basis to approximately 12.1 thousand customers.



For more information, please visit the Company's website: www.celesc.com.br/ri or contact the Investor Relations Department:

Phone: (55 48) 3231-5100
ri@celesc.com.br

FIRB
 FINANCIAL INVESTOR RELATIONS

Phone: (55 11) 3045-1080
firb@firb.com

